



ASi Control Pod

Handlebar-mounted controls to easily operate any eBike: turn it on/off, enable walk mode, and change the level of assist with ease. Simple and ergonomic to use without having to stop the bike.

ASi Product Compatibilities

Controller	BAC 350W
	BAC 500W
	BAC 800W
Display	Any ASi display

Easy LIN connection



- **Easy** to integrate
- **Easy** to use



ASi Display

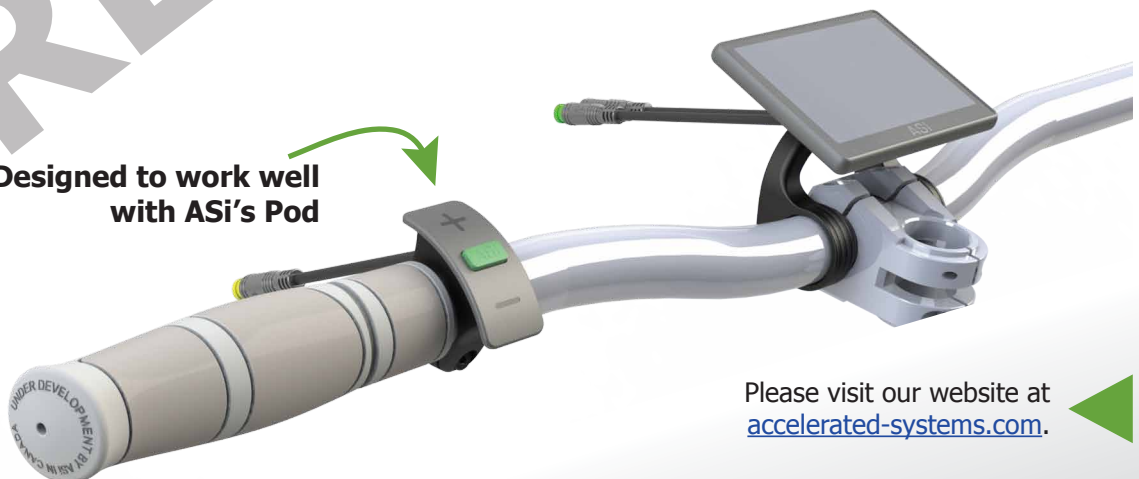
Key Specifications

Display type	Bitmap
Communications	LIN
Screen type	LCD transfective
Screen resolution	240 x 160
Screen size	88mm
Voltage	12V
Ingress protection	IP66
Dimensions	92mm x 66 x 7.2

Add another level of information to your bike. Easily display the battery state of charge, distance travelled in the current trip, current speed, and more. Interact with menus and setup with the ASi Pod. Customize to add your own branding.

- **Highly customizable** bitmap screen
- **Easy** to integrate
- **Easy** to use
- Optional menu & setup functionality

Designed to work well with ASi's Pod



Please visit our website at accelerated-systems.com.

